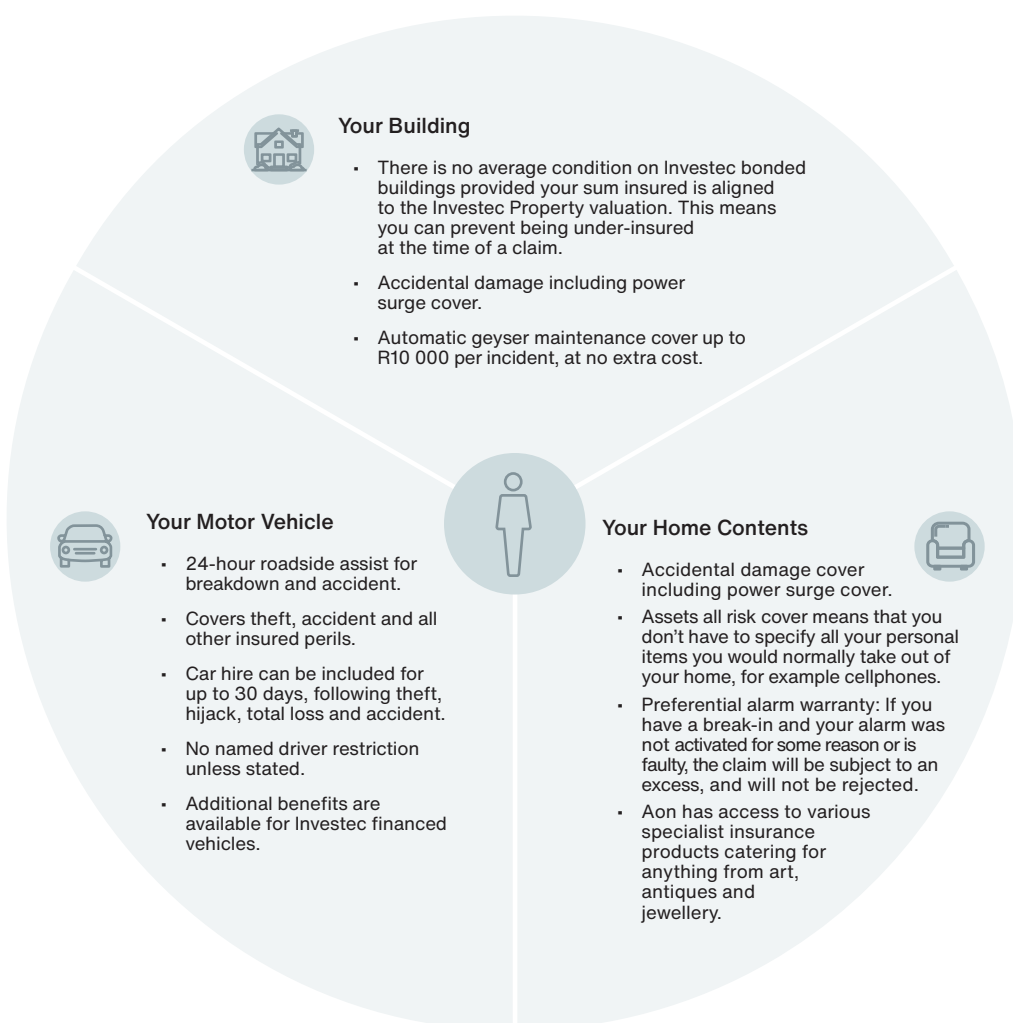


Personal Insurance Solutions

for Investec clients

As the insurance broking partner to Investec Private Banking, you can be assured that our advice and solutions will give you the clarity and confidence to make better decisions to protect and grow your assets. You will be better informed, better advised and supported throughout your insurance journey with Aon.

As an Investec Broking Private client, you have access to a wide range of insurance solutions which include:



As your broker we will:

- Perform a comprehensive risk assessment and find the right cover for you at the most competitive price.
- Ensure that the insurance product selected adequately addresses your needs.
- Be your claims advocate, so when you submit a claim, we will liaise with the insurer on your behalf to ensure a fair and speedy process.
- Help you navigate the often-complex world of insurance, using our experience and knowledge.

* Subject to policy terms and conditions.

For more information, contact Aon South Africa:

0860 746 466

investecsales@aon.co.za

www.aon.co.za

About Aon: Aon plc (NYSE: AON) exists to shape decisions for the better — to protect and enrich the lives of people around the world. Through actionable analytic insight, globally integrated Risk Capital and Human Capital expertise, and locally relevant solutions, our colleagues provide clients in over 120 countries with the clarity and confidence to make better risk and people decisions that help protect and grow their businesses.

Disclaimer: The information contained herein and the statements expressed should not be considered or construed as insurance broking advice and are of a general nature. The information is not intended to address the circumstances of any particular individual or entity. Accordingly, the information contained herein is provided with the understanding that Aon, its employees and related entities are not rendering insurance broking advice. As such, this should not be used as a substitute for consultation with an Aon Broker or Consultant.

Although we endeavour to provide accurate and current information and we use sources we consider reliable, Aon does not warrant, represent or guarantee the accuracy, adequacy, completeness or fitness for any purpose of the information and can accept no liability for any loss incurred in any way by any person who may rely on it. You should not act on such information without appropriate professional advice after a thorough examination of the particular situation. Aon reserves the right to change the content of this document at any time without prior notice. Descriptions, summaries or highlights of coverage do not amend, alter or modify the actual terms or conditions of any insurance policy. Coverage is governed only by the terms and conditions of the relevant policy. This document has been compiled using information available to us at date of publication.

For further information on our capabilities, please visit: www.aon.co.za or www.aon.com

Aon South Africa (Pty) Ltd, an Authorised Financial Services Provider, FSP # 20555. Aon Limpopo (Pty) Ltd, an Authorised Financial Services Provider, FSP # 12339.

© 2025 Aon SA (Pty) Ltd. All rights reserved. March 2025